



STORM CHASING

ECMWF meeting
14th June 2017

Paul Knightley, MeteoGroup

STORM CHASING

Chaser

Storm

Tornado

Location

Equipment

Storm
chasing

Chaser

- What kind of personality?
- Chasing with a team or alone?
- What kind of knowledge is required?
- What kind of experience?
- Tour company?



STORM CHASING

Chaser

Storm

Tornado

Location

Equipment

Storm
chasing

Storm

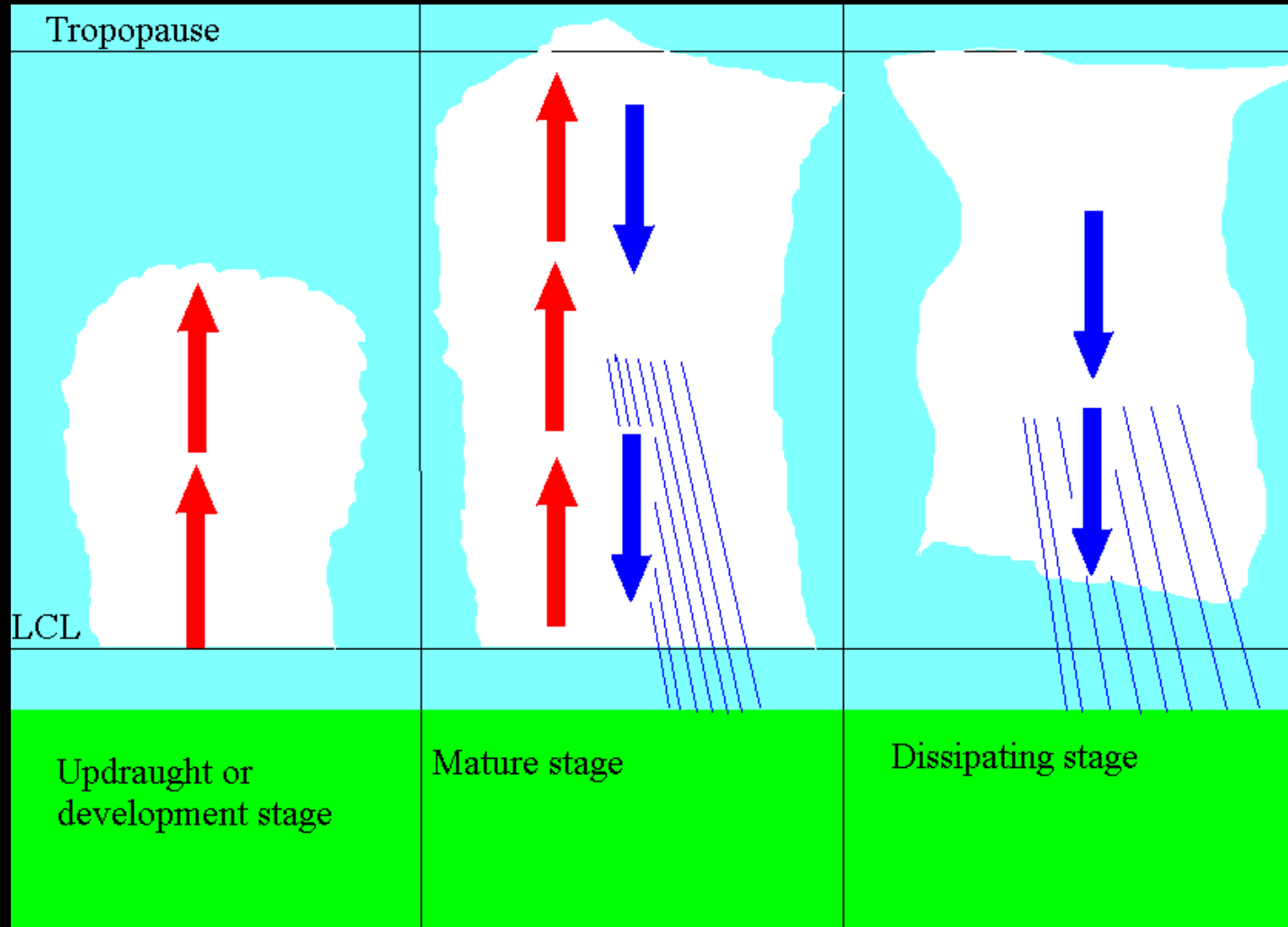
Moisture

Instability

Lift



Storm

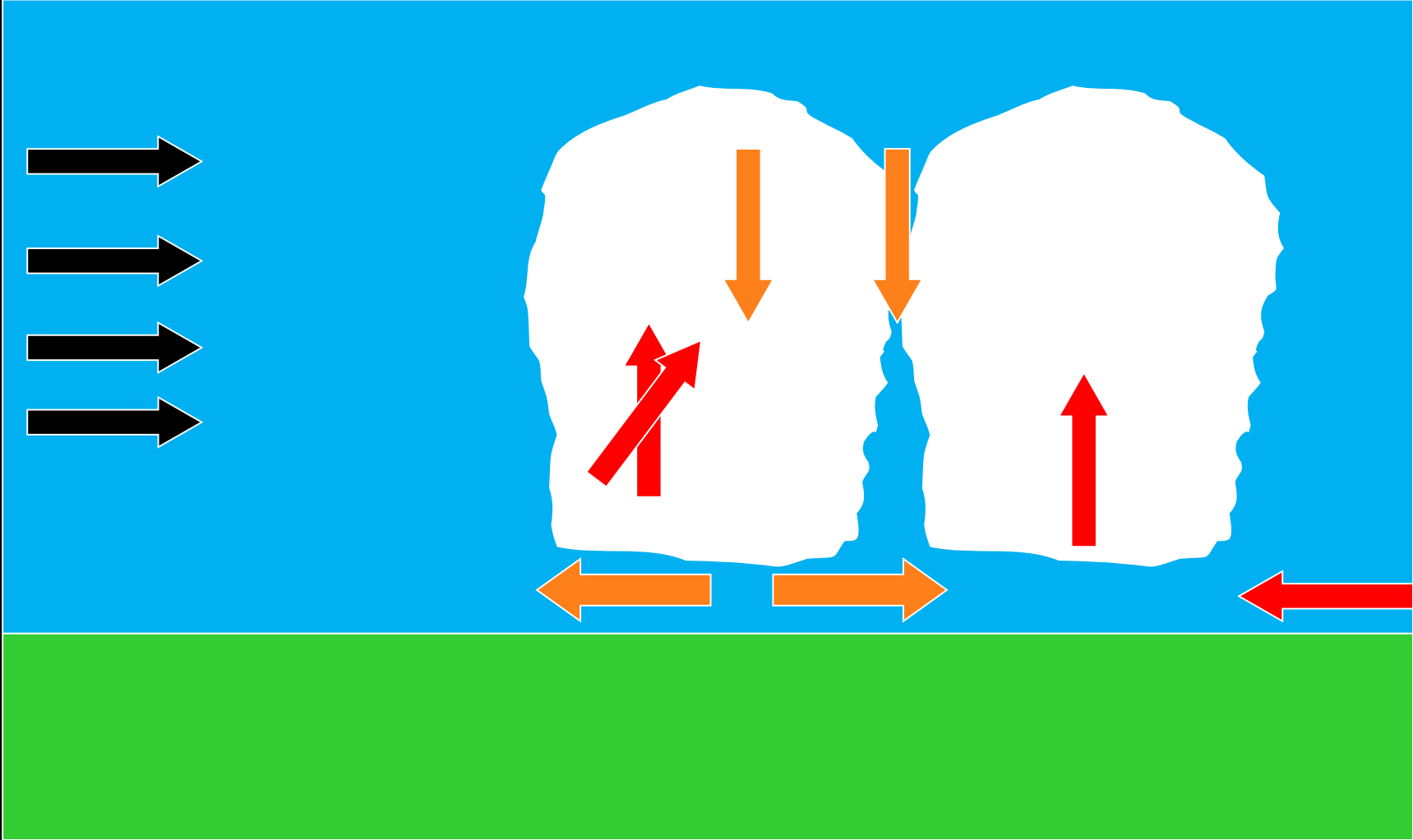


Storm

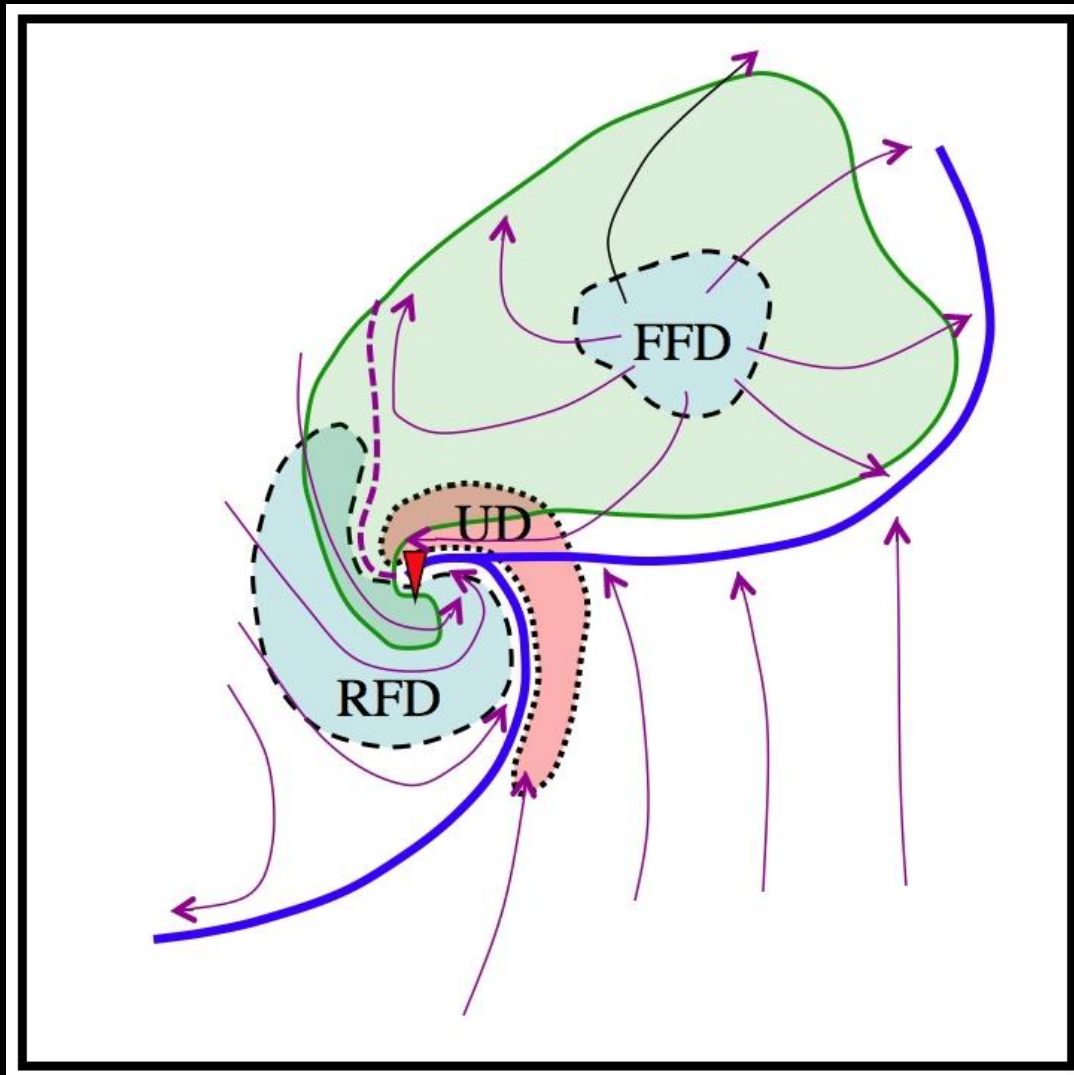
What does 'severe' mean?



Storm



Storm

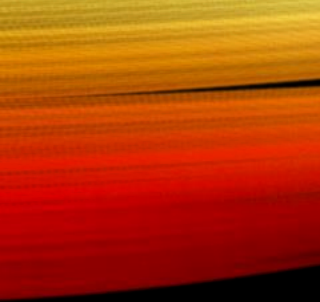


Thanks to Dr. Chuck
Doswell III

<http://www.flame.org/~cdoswell/SuptorRoles/SuptorRoles.html>



Copyright Paul Knightley





Copyright Paul Knightley



STORM CHASING

Chaser

Storm

Tornado

Location

Equipment

Storm
chasing

Tornado

- Definition
- Why?
- Types

STORM CHASING

Chaser

Storm

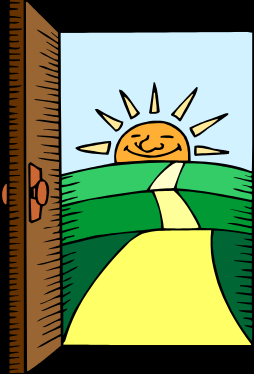
Tornado

Location

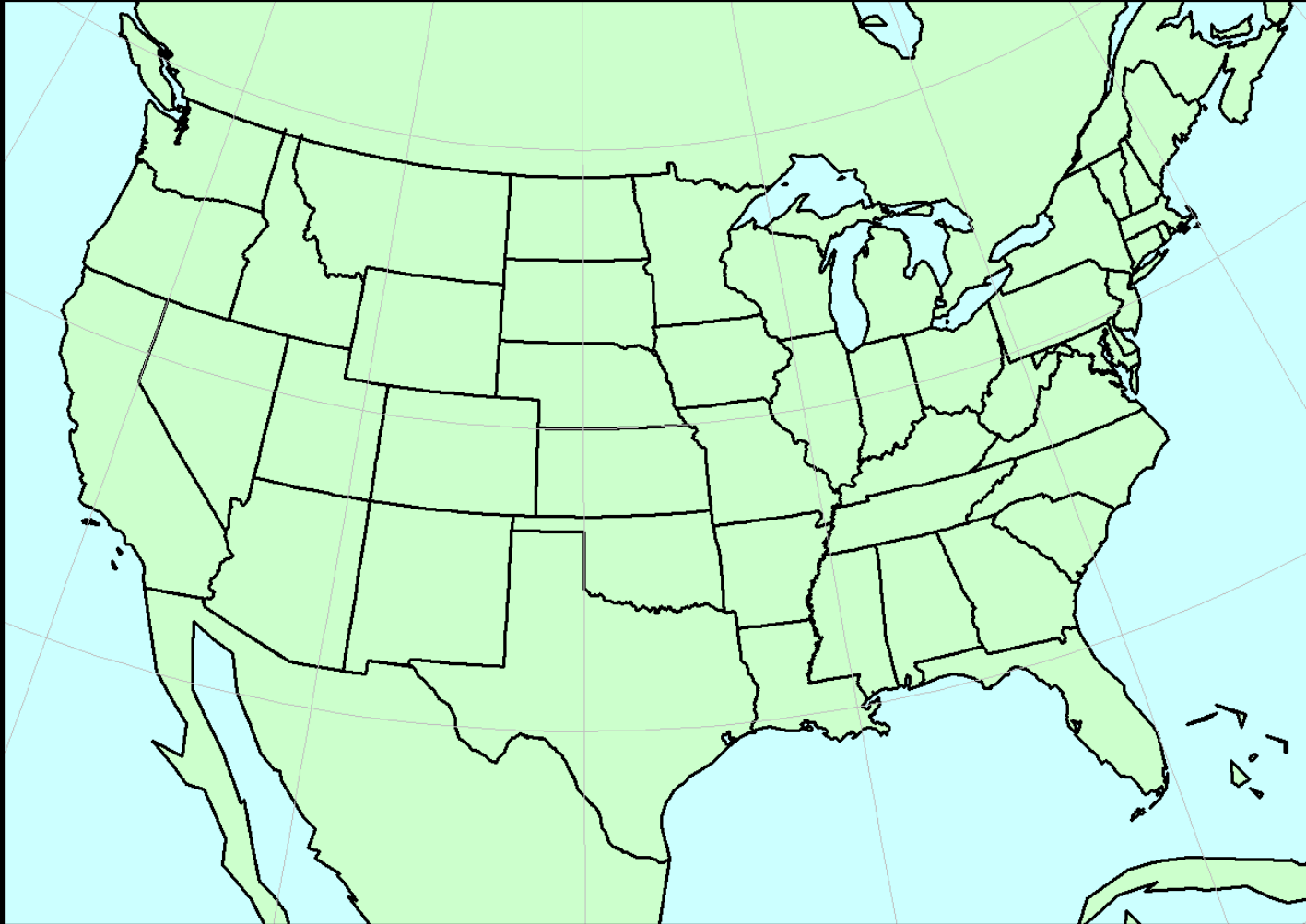
Equipment

Storm
chasing

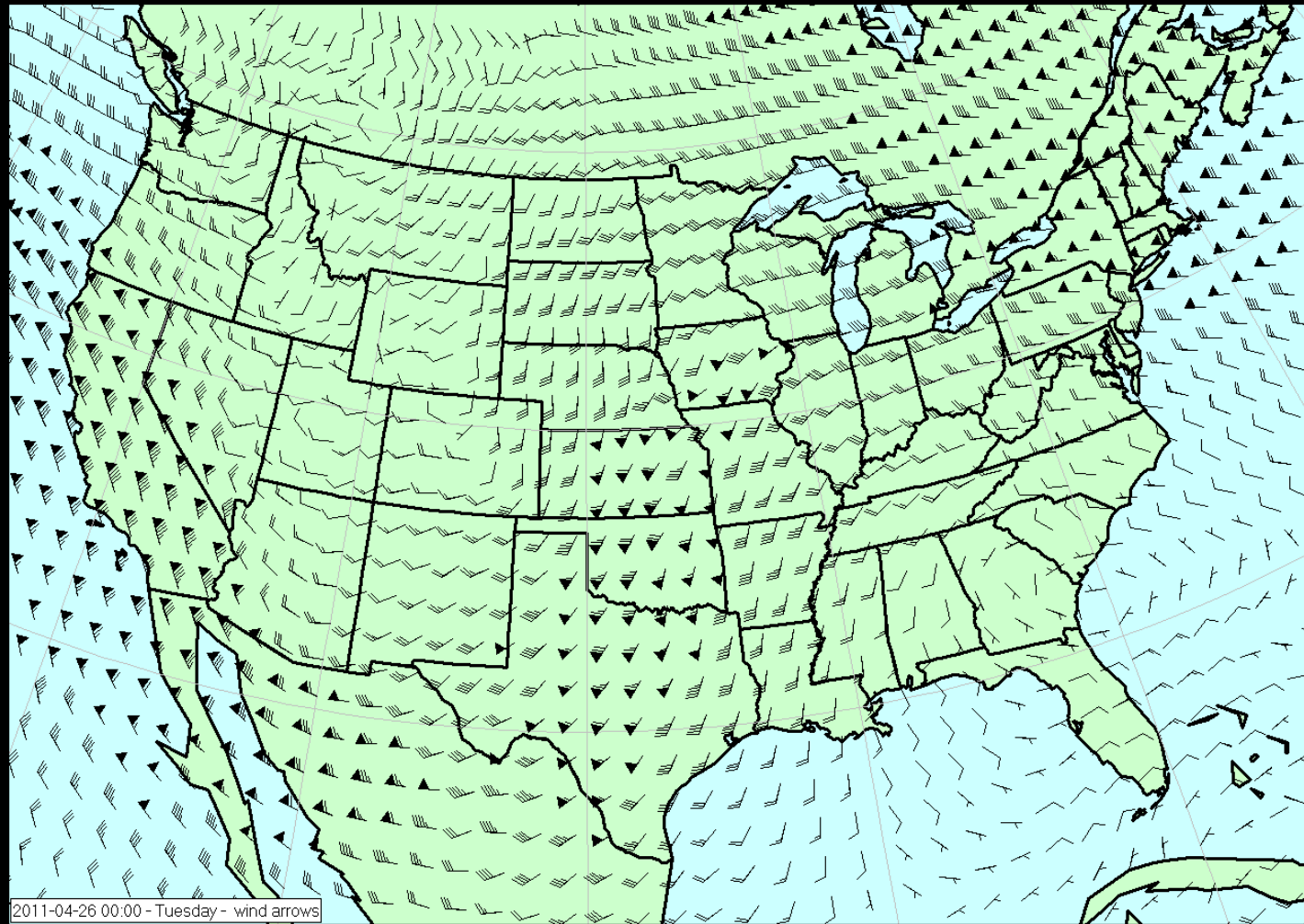
Location



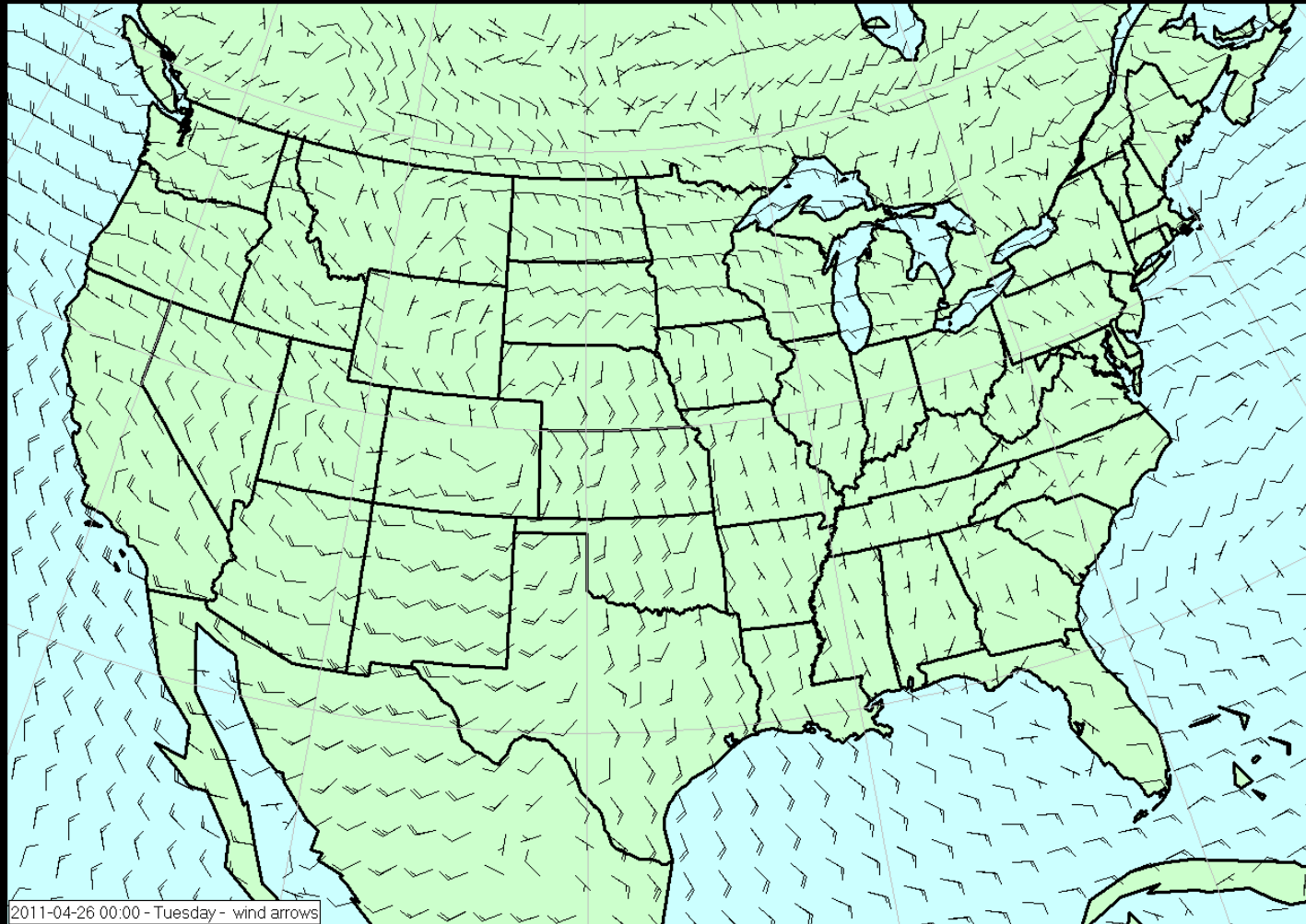
Location



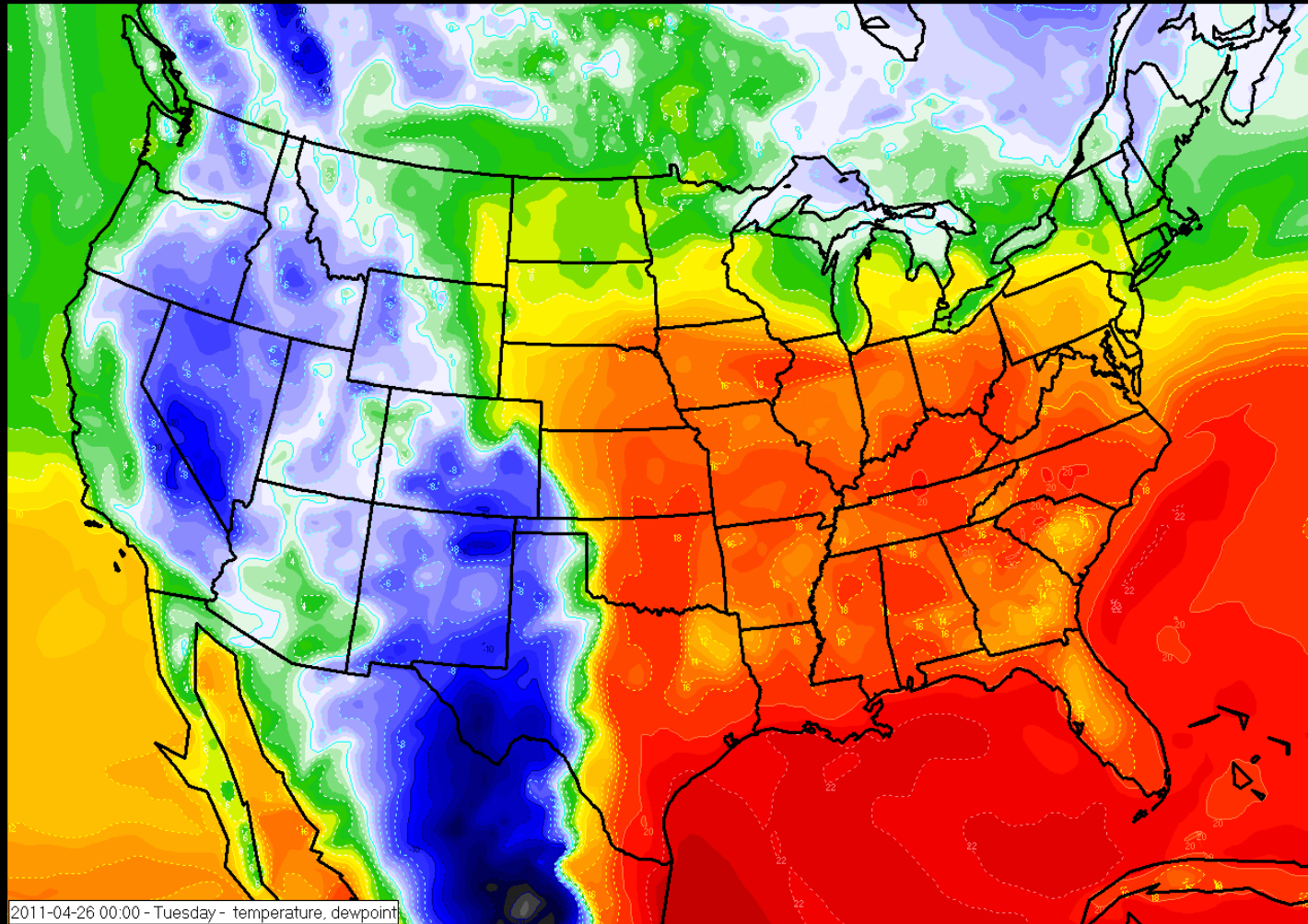
Location



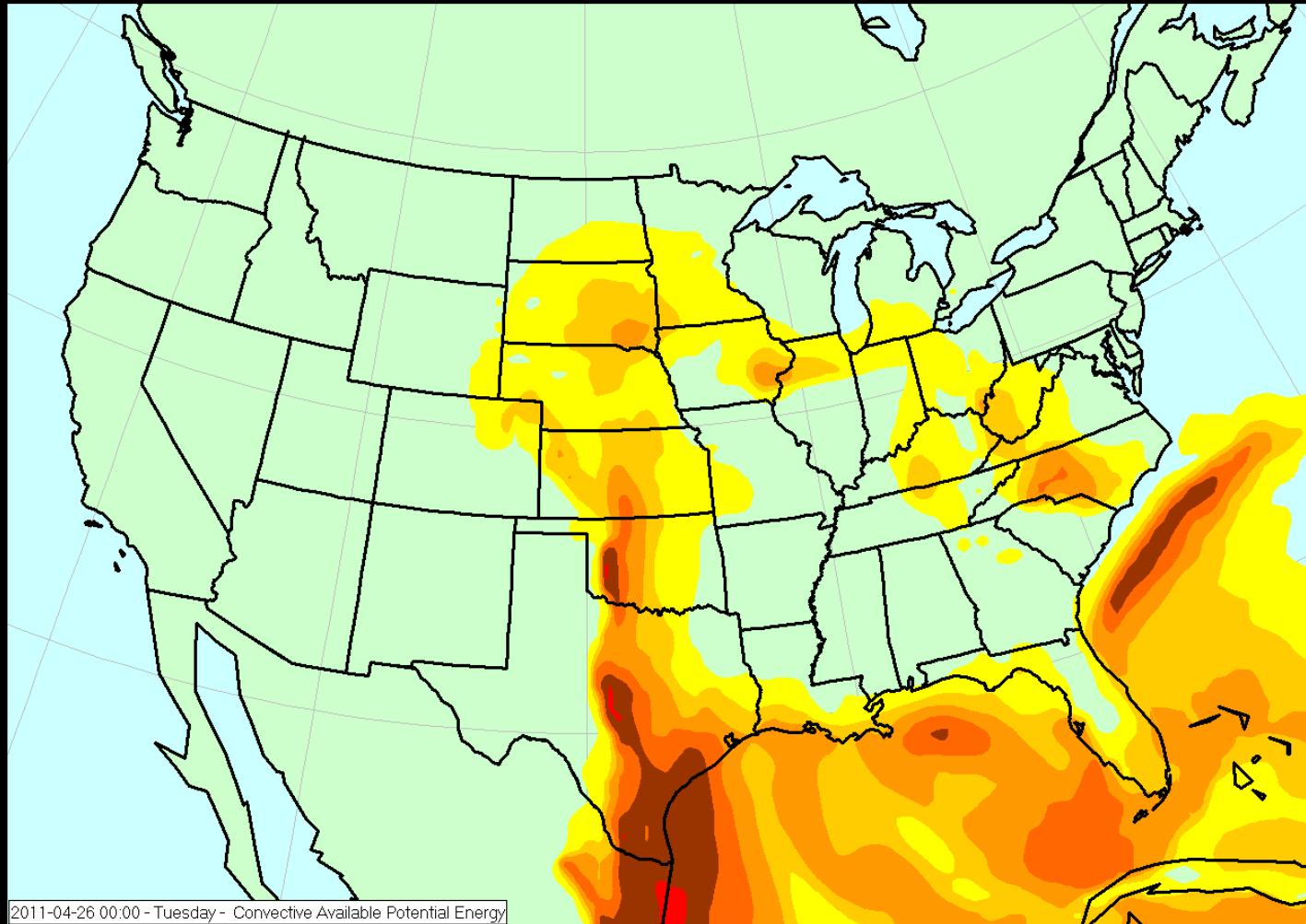
Location



Location



Location

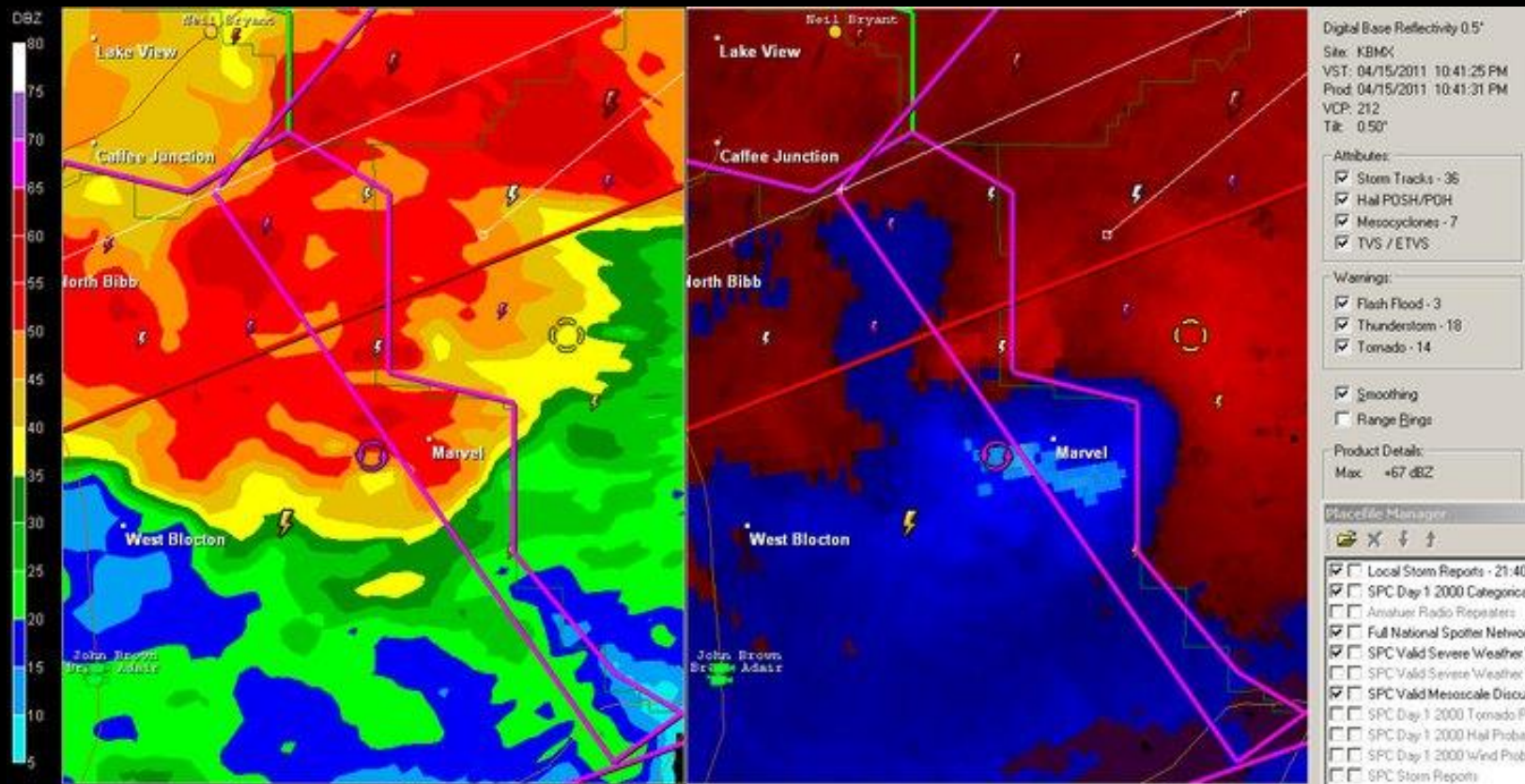


Location



**Eye On
The Sky**

Location



Location



STORM CHASING

Chaser

Storm

Tornado

Location

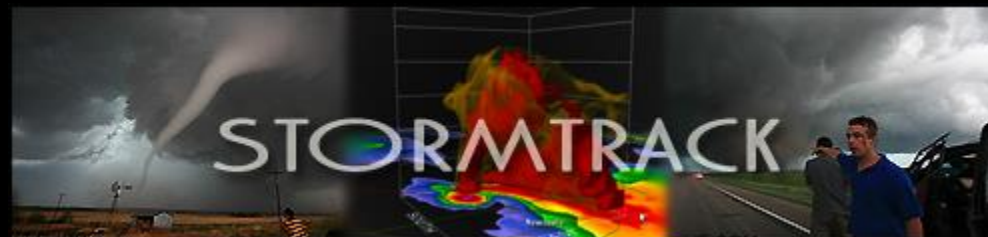
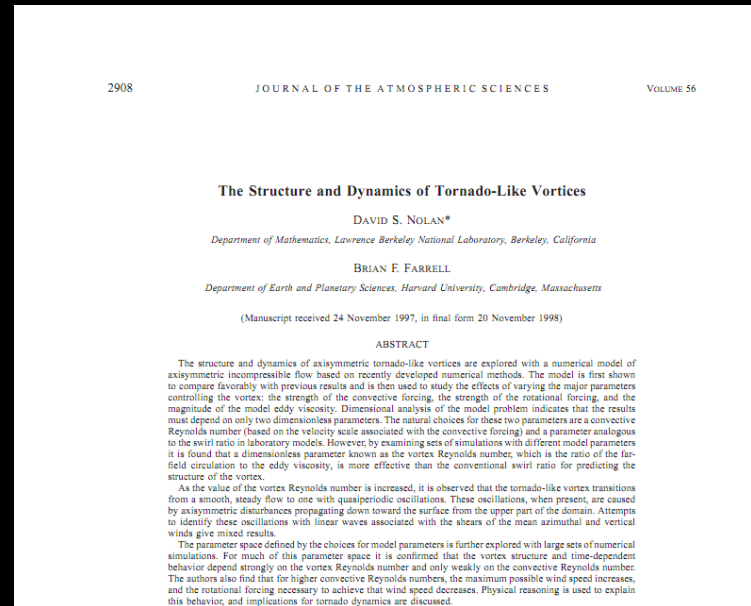
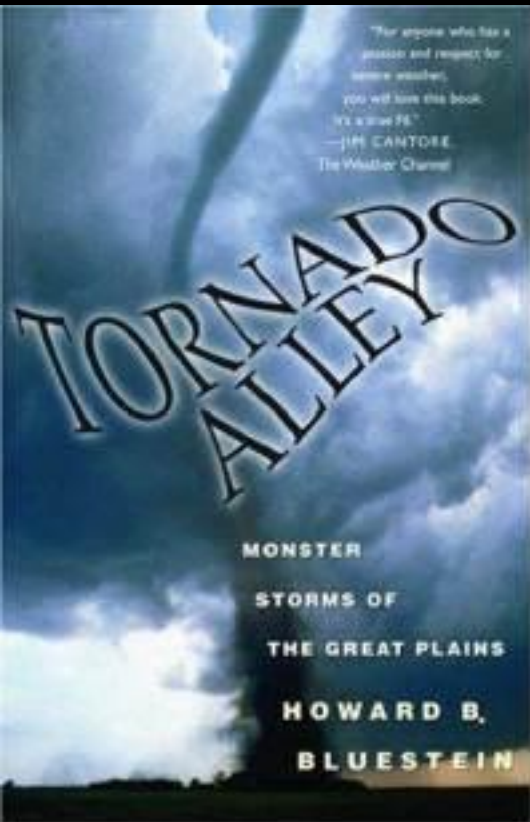
Equipment

Storm
chasing

Equipment

- Knowledge
- Car
- Cameras
- Laptop
 - GPS
 - Radar
 - Internet

Equipment



Equipment



Copyright Paul Knightley

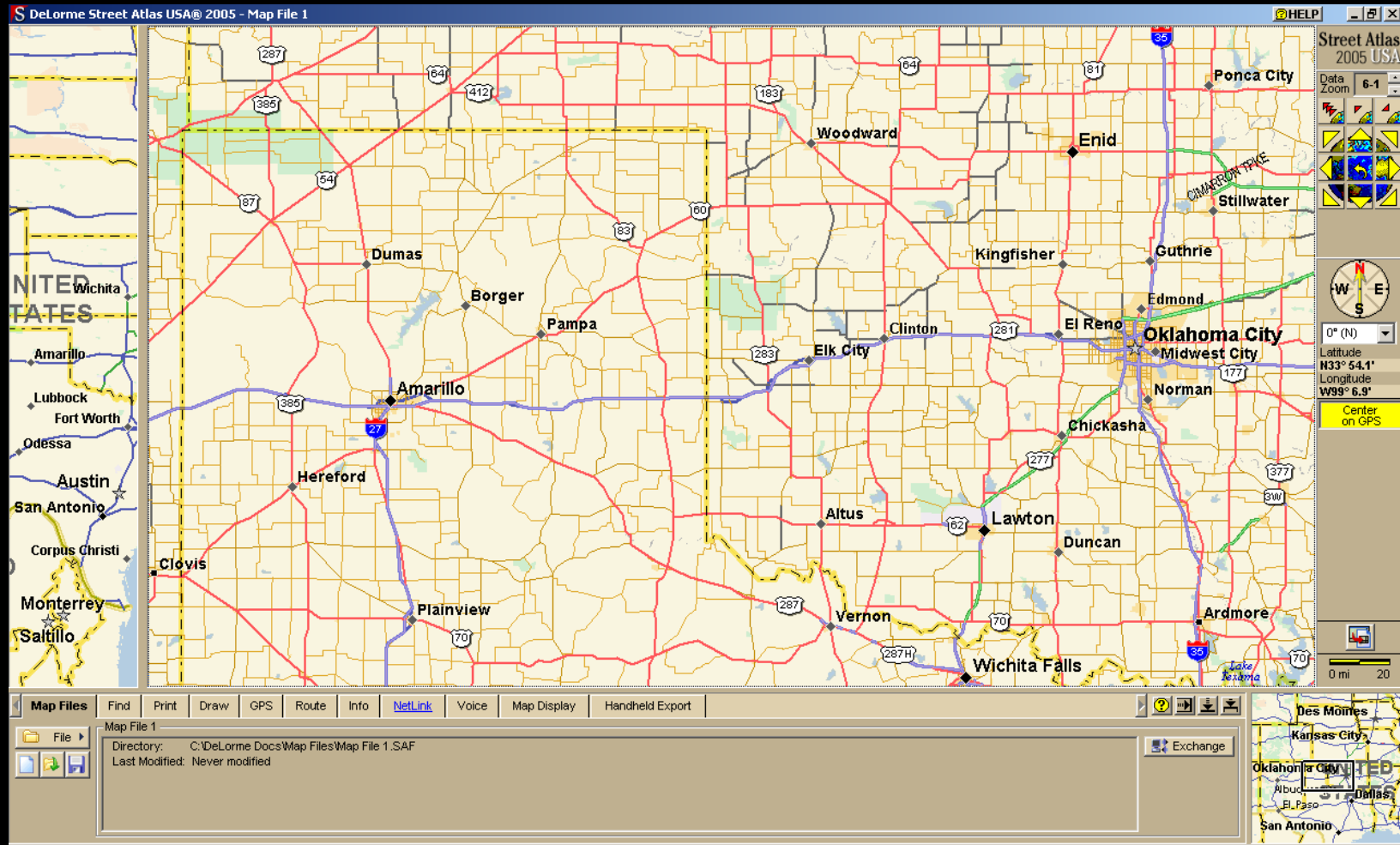
Equipment

- Camera
 - Still or video?
 - HD or 4K?
 - Digital or film?
 - Compact or SLR/DSLR
 - TRIPOD!!
 - Go Pro?

Equipment

- Laptop
 - GPS
 - Radar
 - Internet
- Mobile phone

Equipment

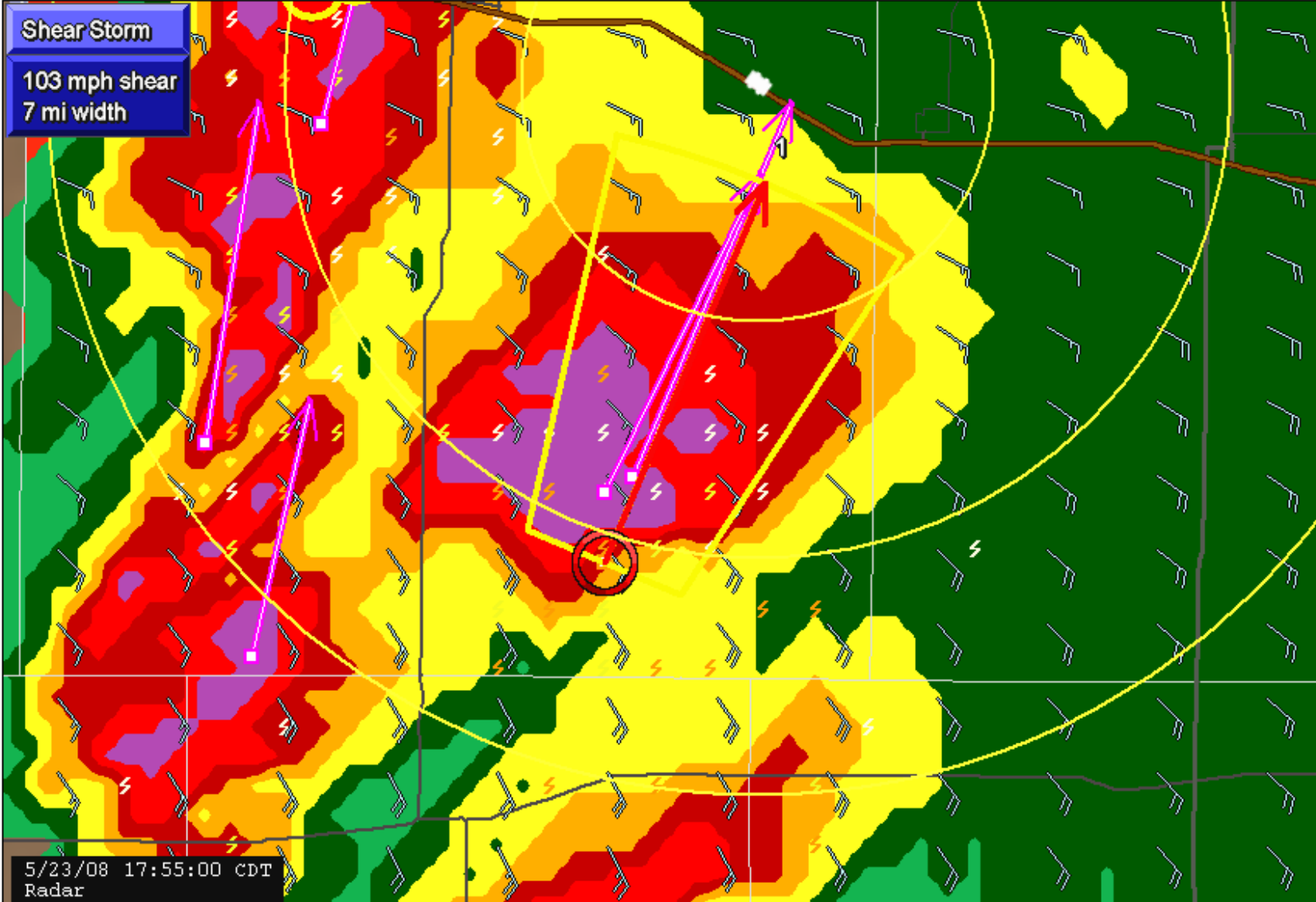




Loop
In
Out
Map
Tracks
↕
🔍
GPS
XmLink
Page 2
Reset

GPS: Dir 127 deg Spd 0 mph Diff 4/11 sats Az 198, Rng 20.8 mi

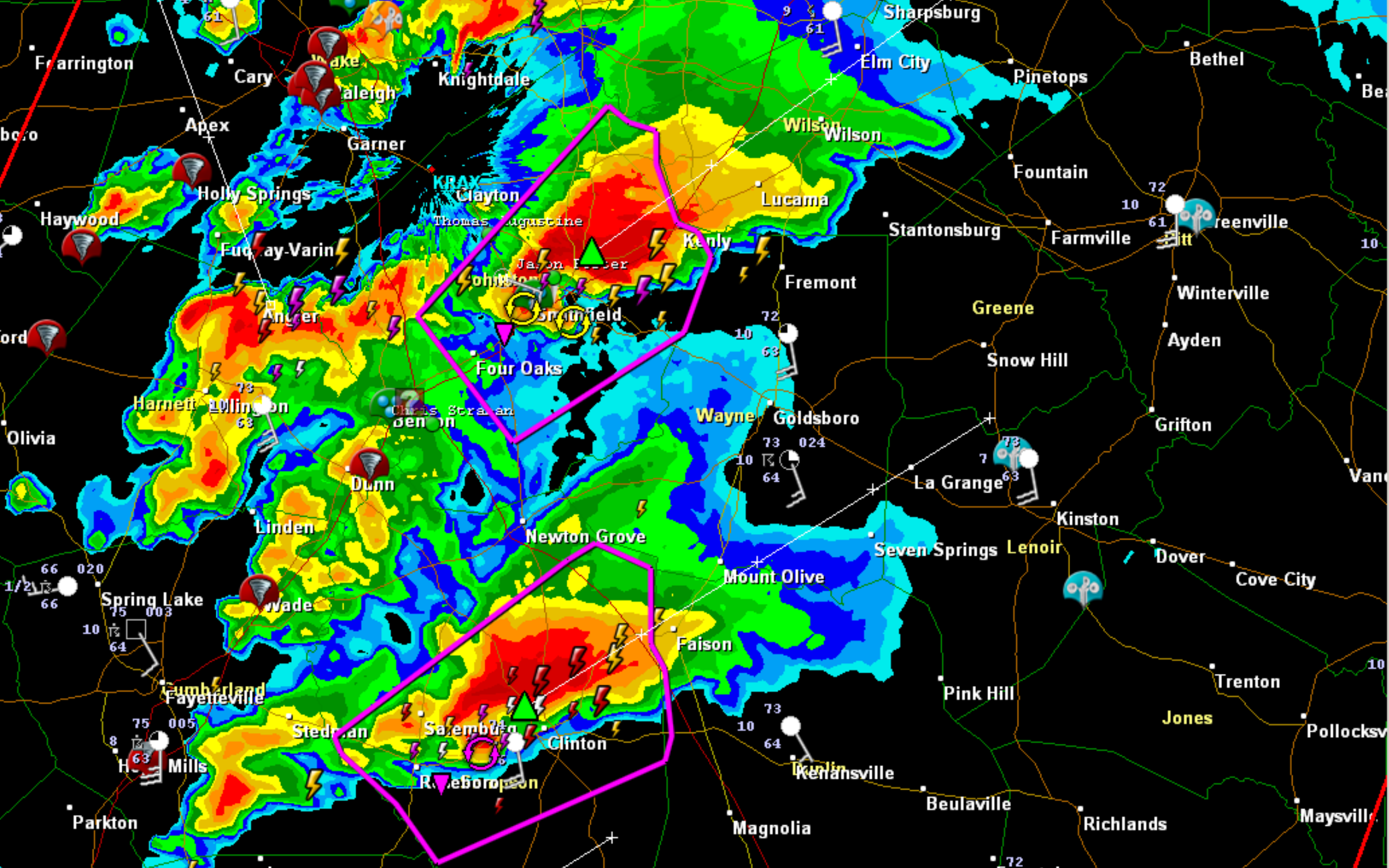
Shear	Radar
County Warnings	Strikes
Canadian Messages	Sensors
Tropical	Marine Zones
↑ Satellite ↓	
↑ Tops ↓	
↑ Winds Surface ↓	
← Fronts →	
← Surface →	
← Waves →	



5/23/08 17:55:00 CDT
Radar

County: Gove, KS Tornado Warning until 18:15 T'storm Warning until 18:45 Flash flood warning until 22:45

View radius : 19.0 mi



Digital Base Reflectivity

Site: KRAX
 VST: 04/16/2011 09:00
 Prod: 04/16/2011 09:00
 VCP: 212
 Tilt: 1.30°

Attributes:

- Storm Tracks - 3
- Hail POSH/POH
- Mesocyclones -
- TVS / ETVS - 2

Warnings:

- Flash Flood - 7
- Thunderstorm - 8
- Tornado - 9

Smoothing

Range Rings

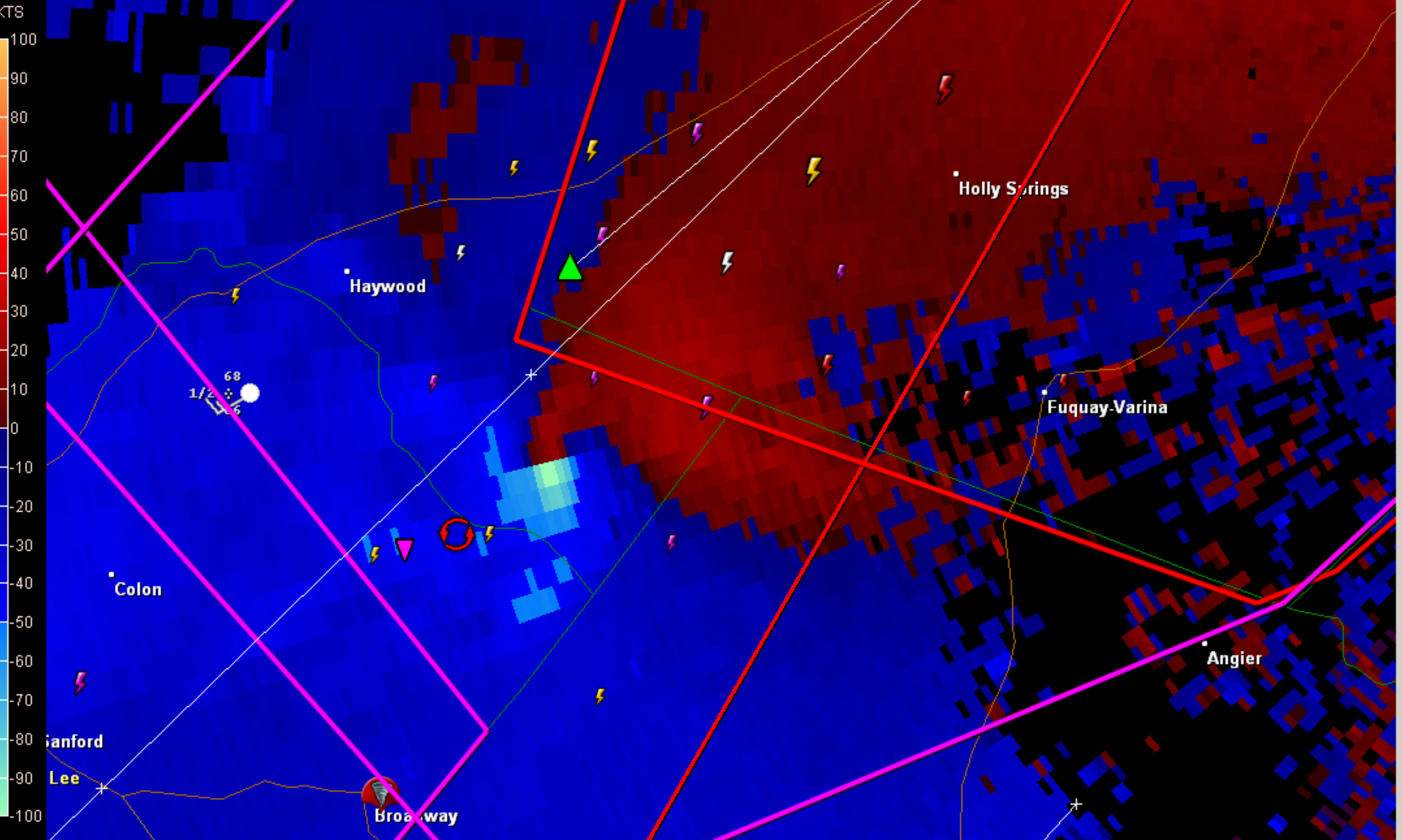
Product Details:

Max: +65 dBZ

Placefile Manager



- Local Storm R
- SPC Day 1 20
- Amateur Radio
- Full National S
- SPC Valid Sev
- SPC Valid Sev
- SPC Valid Mes
- SPC Day 1 20
- SPC Day 1 20
- SPC Day 1 20
- SPC Storm Re



Digital Base V
Site: KRAX
VST: 04/16/2
Prod: 04/16/2
VCP: 212
Tilt: 0.50°

- Attributes:
- Storm T
 - Hail PD
 - Mesocy
 - TVS / E

- Warnings:
- Flash F
 - Thunde
 - Tornado

- Smooth
- Range

Product Def
Max: +12
Min: -12

Placefile M

- Local
- SPC D
- Amatu
- Full N
- SPC V
- SPC V
- SPC V
- SPC D
- SPC D
- SPC D
- SPC D
- SPC D

STORM CHASING

Chaser

Storm

Tornado

Location

Equipment

Storm
chasing

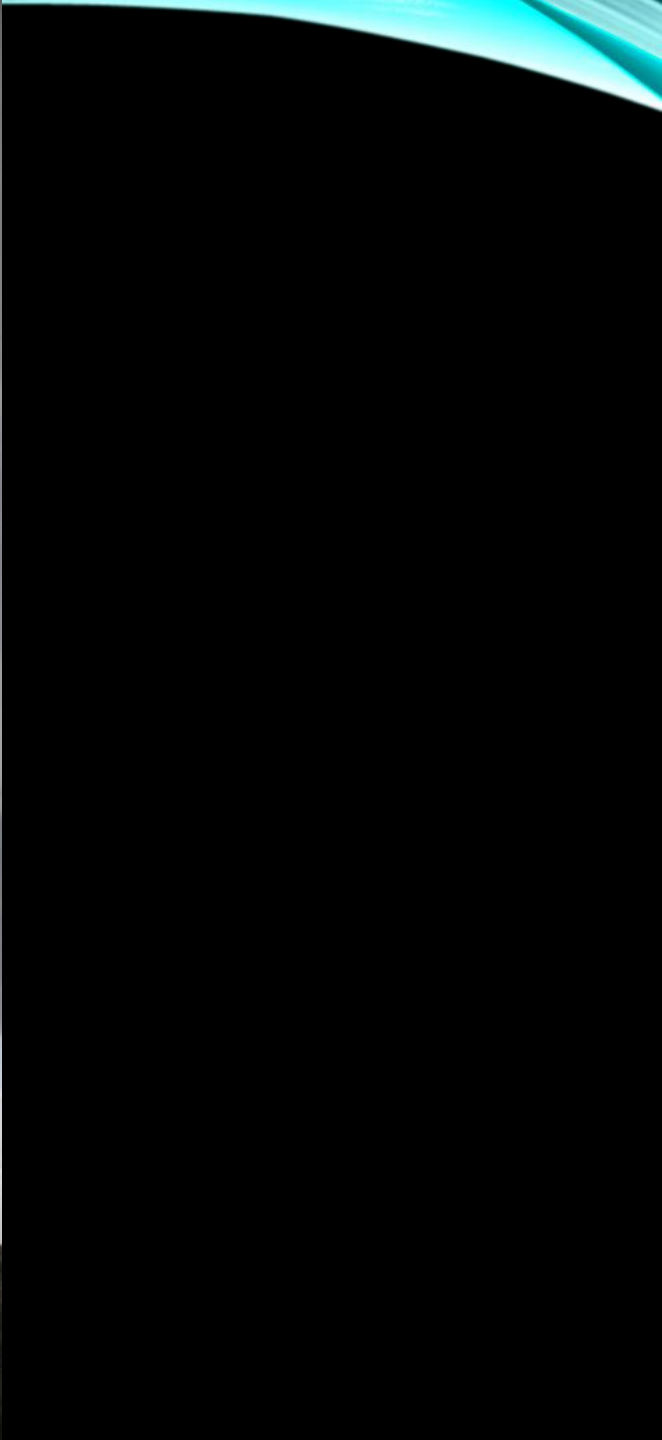
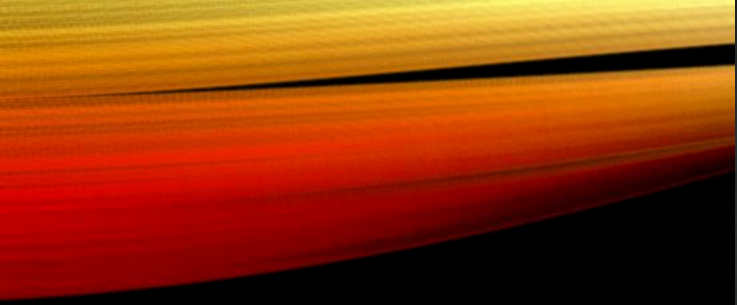


Copyright Paul Knightley



Copyright Paul Knightley





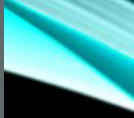
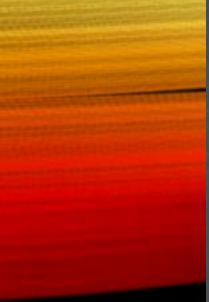














Copyright Paul Knightley



Copyright Paul Knightley



Copyright Paul Knightley



, INC.

Copyright Paul Knightley



Copyright Paul Knightley



Copyright Paul Knightley